

Elkford Community Engagement Night

Information Sheet

Supporting Students and Families in Elkford

Southeast Kootenay School District appreciates the strong participation and thoughtful feedback shared during the Elkford Community Engagement Night on May 19, 2026. The District values ongoing dialogue with families, staff, students, and community members as we continue working together to support student success in Elkford.

Community Engagement and Communication

The District is committed to continuing community engagement opportunities in Elkford and exploring additional online or hybrid participation options through Teams or other virtual platforms. The District will also review ways to improve accessibility for families, including considerations such as childcare or babysitting support during meetings.

Education Assistants and Student Supports

Families raised concerns regarding Education Assistant recruitment and retention, as well as support availability for students with diverse learning and behavioural needs. The District recognizes the critical role Education Assistants play in supporting students and classrooms. Recruitment and retention remain ongoing priorities across the District, particularly in rural communities.

Mental Health Supports

Community members emphasized the importance of mental health supports for both students and staff. The District recognizes that student and staff well being are foundational to learning and school success.

Early Dismissal Concerns

The District understands that schedule adjustments can affect families differently across communities. Feedback received during engagement sessions will continue to inform future planning and decision making.

Elkford Specific Needs

The District recognizes that rural and remote communities experience distinct challenges related to staffing and recruitment, transportation, access to services, housing availability, and community programming opportunities.

Teacher Recruitment, Retention, and Housing

The District continues to explore rural recruitment initiatives, partnerships with post secondary institutions, mentorship and support opportunities for new teachers, and housing solutions to support staff recruitment and retention.

Elkford Staff Housing Project

The District is actively advancing the Elkford Housing Project to support recruitment and retention efforts for employees working in Elkford.

We are currently working closely with our architectural and engineering consultants to establish the necessary groundwork for site servicing and to advance the project toward construction. Preliminary designs have been completed, and the project is currently moving through the civil engineering phase prior to the next stage of development.

Tentative Project Schedule – Unit 1

- Late Summer 2026 – Project Kick Off Meeting
- December 2026 – Submission for Building Permit
- January 2027 – Tender Issued
- March 2027 – Construction Commences
- December 2027 – Substantial Completion of Unit #1

Preliminary Housing Concept (See Attachment)

The preliminary concept includes eight two-bedroom residential units, parking and bicycle parking, outdoor amenity and playground space, and site access from Balmer Drive and Alpine Way. The concept plans remain preliminary and subject to further engineering, permitting, and regulatory approvals.

Facilities and Safety Questions

Questions were raised regarding school yard gates, building systems, and whether similar facility reviews are occurring at other schools. The District Operations Department continues to monitor and assess facility infrastructure needs across the District to ensure safe and functional learning environments.

Transportation

Community members requested additional information regarding commuter transportation options.

Classroom Environment and Supervision

Families expressed concerns regarding screen time usage in classrooms and lunch time supervision. The District supports balanced instructional practices that incorporate direct instruction, hands on learning, literacy and numeracy development, and technology enhanced learning where educationally appropriate.

Next Steps

The District appreciates the thoughtful feedback received during the Elkford Community Engagement Night. Community input helps inform planning, supports ongoing improvement efforts, and strengthens partnerships between schools and families.

CITY OF ELKFORD LAND-USE BYLAW REVIEW

LEGAL ADDRESS Lot B, District Lot 3512, Kootenay District Plan 12785
 CIVIC ADDRESS 2400 Balmer Drive, Elkford, BC V0B 1H0

Regulation:	Requirement:	Proposed:	Rezoning:
Site Data:			
Zoning:	P-1 Public Institutional	P1: Employee Dwelling	R-5 Comprehensive Development Residential
Total Lot Area:	11,926.96 sq.m.	Existing	min 315 sq.m.
Total Building Footprint:	max 1,193 sq.m.	507 sq.m.	max 1,193 sq.m.
Total Site Coverage:	10% for accessory building	4.25 %	max 35%
Setbacks: when abutting residential zones			
Front Yard:	n/a	8.3 m	7.5
Side Yard:	4.5m	56 m	4.5m
Rear Yard:	n/a	n/a for that site	7.5m
Building Height:	5m for accessory building	2 Storeys	10m for townhouses
Suites:			
2 Bedroom Unit:	5m for accessory building	8 Units	Not restricted
Building Area:			
Total Floor Area:	4.15(g)(ii): Each dwelling unit shall be not less than 40 sq.m. in floor area or more than 90 sq.m.	90 sq.m / unit Total: 720 sq.m	min 60 sq.m. / townhouse dwelling + 30 sq.m. of usable open space / dwelling + 5 sq.m. of common activity area / dwelling
Parking:			
1 Stall / 1 Employee Dwelling Unit	8 Stalls	8 Stalls	8 Stalls
1 B/F Parking / 50 stalls	1 Stalls	1 Stalls	1 Stalls
1 Bike Stall / 1 Dwelling Unit	8 Stalls	8 Stalls	8 Stalls
Parking Stall Size	2.75m x 5.5m	2.75m x 5.5m	2.75m x 5.5m
Parking Stall Size	2.75m x 5.5m	2.75m x 5.5m	2.75m x 5.5m
Bycycle Parking Size	Minimum width of 0.3m	0.3m wide	Minimum width of 0.3m
Parking Aisle Width	Minimum 7.5m	7.5m	Minimum 7.5m

Landscaping:
 On a Lot zoned P-1, any part of such Lot which is not used for Buildings, exterior display areas, parking, or loading facilities, shall be fully landscaped and properly maintained in a permeable state.

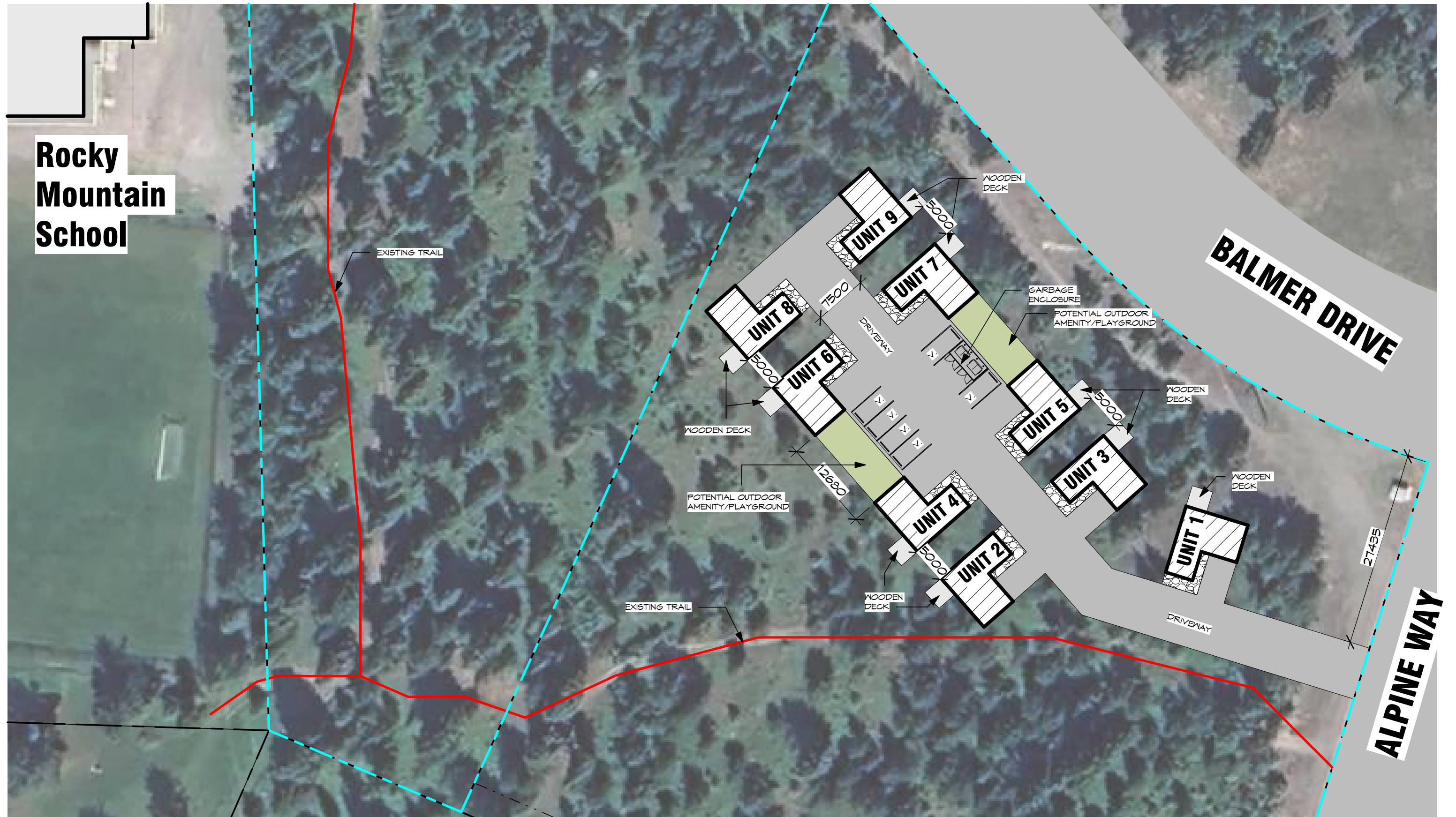


Bylaw Review and Keyplan

Elkford School Residential Housing Concept

2025 12 10

Rocky Mountain School



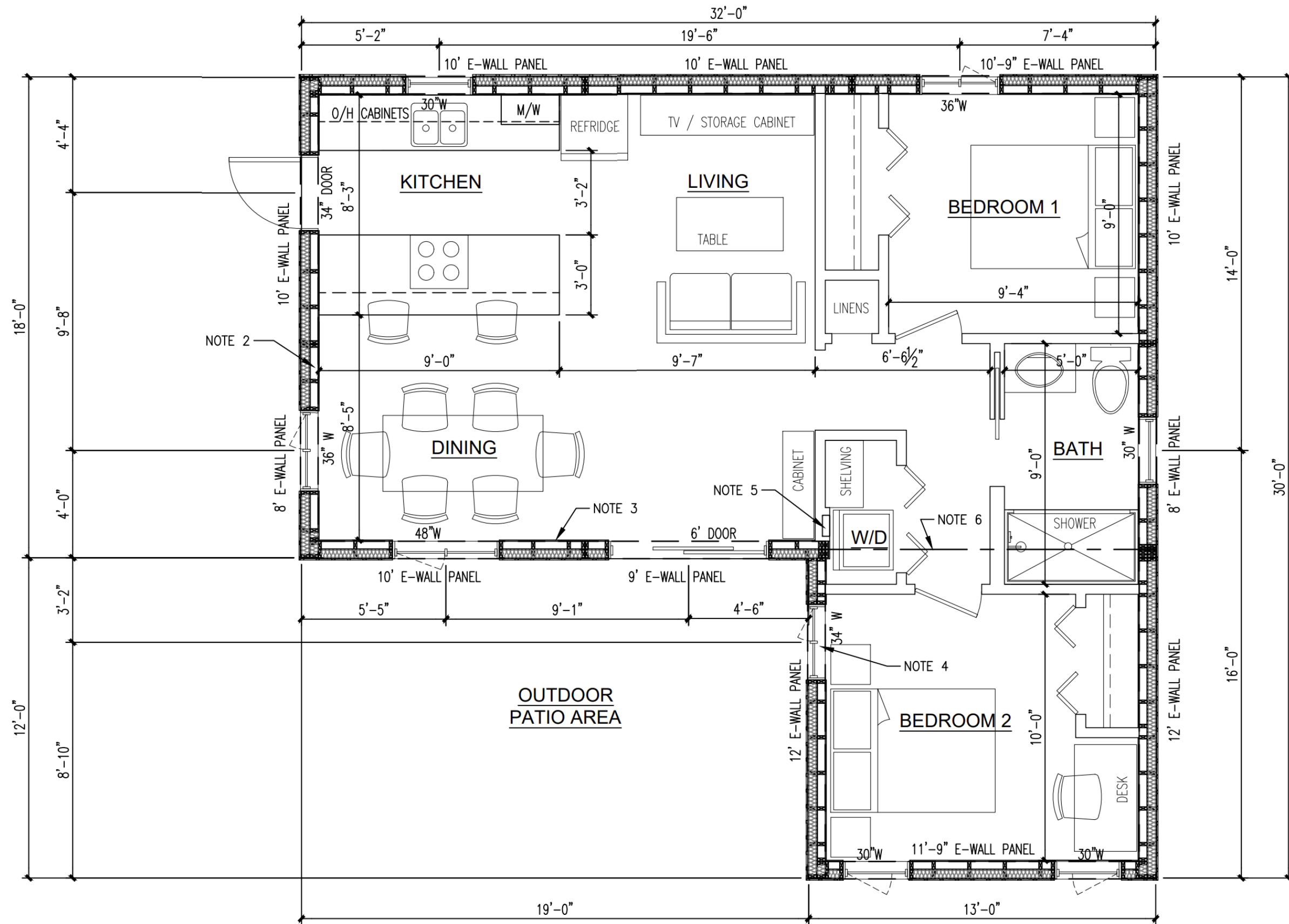
Fit Test Site Plan

Elkford School Residential Housing Concept

2025 12 10



berry architecture
+associates



* THIS DRAWING IS NOT TO SCALE.

Floor Plan

Elkford School Residential Housing Concept

2025 12 10