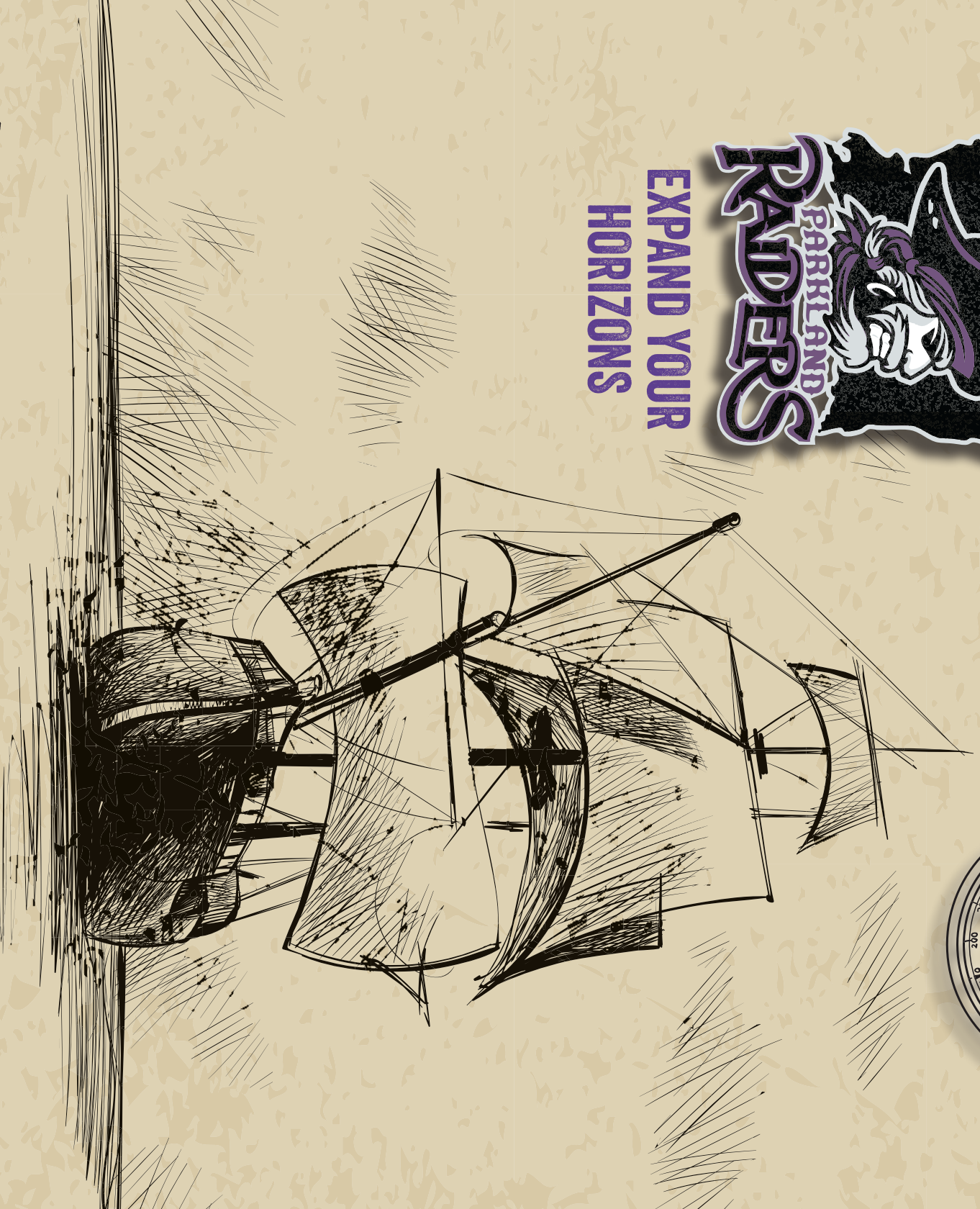




EXPAND YOUR  
HORIZONS



# PARKLAND MIDDLE SCHOOL

2024 - 2025 STUDENT HANDBOOK & CALENDAR



# PARKLAND Middle School

## 2024 - 2025 Annual School Calendar

July 2024						
Su	M	Tu	W	Th	F	S
	1	2	3	4	5	6
7	8	9	10	11	12	13
14	15	16	17	18	19	20
21	22	23	24	25	26	27
28	29	30	31			

August 2024						
Su	M	Tu	W	Th	F	S
				1	2	3
4	5	6	7	8	9	10
11	12	13	14	15	16	17
18	19	20	21	22	23	24
25	26	27	28	29	30	31

September 2024						
Su	M	Tu	W	Th	F	S
1	2	3	4	5	6	7
8	9	10	11	12	13	14
15	16	17	18	19	20	21
22	23	24	25	26	27	28
29	30					

October 2024						
Su	M	Tu	W	Th	F	S
		1	2	3	4	5
6	7	8	9	10	11	12
13	14	15	16	17	18	19
20	21	22	23	24	25	26
27	28	29	30	31		

November 2024						
Su	M	Tu	W	Th	F	S
					1	2
3	4	5	6	7	8	9
10	11	12	13	14	15	16
17	18	19	20	21	22	23
24	25	26	27	28	29	30

December 2024						
Su	M	Tu	W	Th	F	S
1	2	3	4	5	6	7
8	9	10	11	12	13	14
15	16	17	18	19	20	21
22	23	24	25	26	27	28
29	30	31				

January 2025						
Su	M	Tu	W	Th	F	S
			1	2	3	4
5	6	7	8	9	10	11
12	13	14	15	16	17	18
19	20	21	22	23	24	25
26	27	28	29	30	31	

February 2025						
Su	M	Tu	W	Th	F	S
						1
2	3	4	5	6	7	8
9	10	11	12	13	14	15
16	17	18	19	20	21	22
23	24	25	26	27	28	

March 2025						
Su	M	Tu	W	Th	F	S
						1
2	3	4	5	6	7	8
9	10	11	12	13	14	15
16	17	18	19	20	21	22
23	24	25	26	27	28	29
30	31					

April 2025						
Su	M	Tu	W	Th	F	S
		1	2	3	4	5
6	7	8	9	10	11	12
13	14	15	16	17	18	19
20	21	22	23	24	25	26
27	28	29	30			

May 2025						
Su	M	Tu	W	Th	F	S
				1	2	3
4	5	6	7	8	9	10
11	12	13	14	15	16	17
18	19	20	21	22	23	24
25	26	27	28	29	30	31

June 2025						
Su	M	Tu	W	Th	F	S
	1	2	3	4	5	6
8	9	10	11	12	13	14
15	16	17	18	19	20	21
22	23	24	25	26	27	28
29	30					



School Breaks



Professional Development Days



Stat Holidays



Administrative Day



Second Semester

Please leave a message at 250.426.3327  
if your child will be absent or late.



PARKLAND MIDDLE SCHOOL

---

### ADMINISTRATIVE TEAM

Brenda Tyson (Ext. 21203)  
Principal

Pam Drydale (Ext. 21204)  
Vice Principal



### COUNSELLOR

Dan van der Walt  
(Ext 21209)

Counsellors are teachers who have special responsibilities. They are trained to work with students who need help with school or personal problems. Please feel free to contact our counsellor.



PARKLAND MIDDLE SCHOOL

---

### TABLE OF CONTENTS

School Map

Bell Schedule

School Expectations

Parents Information

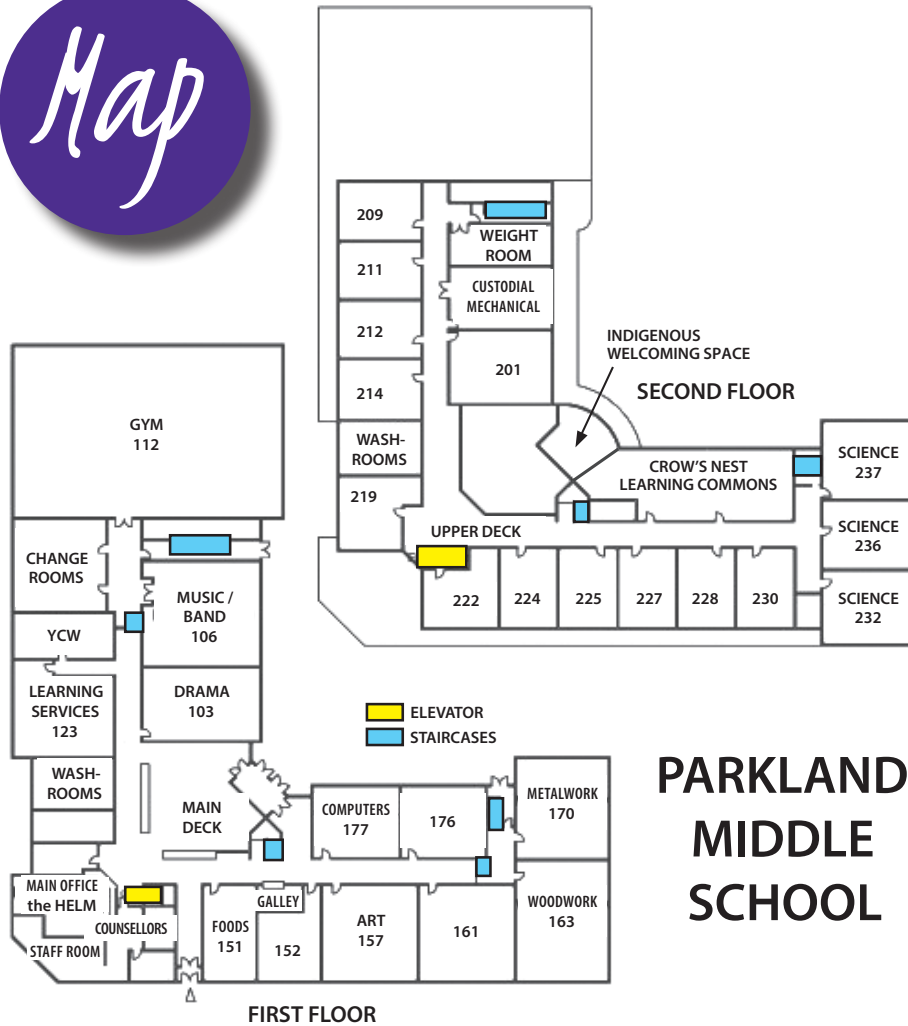
Student Information

Services

Communicating Student Learning

### Visitor Policy

All visitors must report to the office.



## Bell Schedule 2024-2025

	WEEK 1				WEEK 2			
	MON	TUES	WED	THURS	MON	TUES	WED	THURS
8:30 - 9:37	1	6	3	8	5	2	7	4
9:37 - 9:41	TRANSITION							
9:41 - 10:47	2	7	4	1	6	3	8	5
10:47 - 10:57	NUTRITION BREAK							
10:57 - 12:03	3	8	5	2	7	4	1	6
12:04 - 12:52	LUNCH BREAK							
12:53 - 1:59	4	1	6	3	8	5	2	7
1:59 - 2:03	TRANSITION							
2:03 - 3:09	5	2	7	4	1	6	3	8

Revised June 25, 2024

### Friday Rotations:

Sep 13	Thurs 2	Nov 15	Mon 2	Jan 17	Wed 2	Apr 25	Mon 1
Sep 27	Wed 2	Nov 29	Wed 1	Jan 31	Mon 1	May 2	Mon 2
Oct 4	Mon 2	Dec 6	Tues 2	Feb 7	Thurs 1	May 9	Thurs 2
Oct 11	Tues 1	Dec 13	Thurs 1	Feb 21	Mon 2	May 23	Mon 1
Oct 18	Mon 2	Dec 20	Mon 1	Mar 14	Mon 2	Jun 6	Wed 1
Nov 8	Mon 2	Jan 10	Tues 1	Apr 11	Tues 2	Jun 20	Tues 2



## Parkland Values

At Parkland Middle School, we value:  
**Integrity, Responsibility, Respect, Excellence, Kindness**

### Integrity means:

willing to clean up your mistakes  
being honest and sincere  
listening to your conscience  
living by your highest values  
standing up for what you believe in  
doing the right thing even when it is hard

### Responsibility means:

accepting accountability for your actions  
admitting mistakes without making excuses  
taking agreements seriously  
giving your best to whatever you do  
ready and willing to clear up misunderstandings

### Respect means:

speaking and acting with courtesy  
honouring the rules of your family, school and nation  
taking special care of the belongings of others  
treating others as you would like to be treated  
being receptive to the wisdom of elders  
respecting yourself and others

### Excellence means:

giving careful attention to every task and every relationship  
setting noble and realistic goals  
remembering to plan and practice  
developing your special gifts  
knowing that you do not have to do everything

### Kindness means:

showing that you care  
being thoughtful about the needs of other people  
showing love and compassion to those who are sad or need your help  
resisting the temptation to be cruel  
accepting people who are different  
practicing habits that help the environment

School Expectations

## *PARKLAND MIDDLE SCHOOL STUDENTS WILL CONSISTENTLY STRIVE TO:*

1. arrive to class on time.
2. use acceptable language and tone in dealing with others.
3. respect the authority of teachers, administration, and support staff.
4. resolve conflicts without the use of harassment, intimidation, discrimination, threats, or physical violence.
5. follow SD5 Policy and not have alcohol, illicit drugs, tobacco, vape products, or weapons (of any kind) at school or school functions.
6. dress according to the dress code.
7. respect school property and the property of others.
8. be kind to themselves and others.



School Expectations

## Parkland Code of Conduct

The school is governed by a code of conduct which follows and is enforced by the District Code of Conduct. To see the district policy in its entirety, please visit the School District policy at <http://www.sd5.bc.ca/board/policymanual/>. Section 3.7.

SETTINGS	SAFE	RESPECTFUL	RESPONSIBLE
ALL SETTINGS	<ul style="list-style-type: none"> <li>-no fighting</li> <li>-no bullying</li> <li>-no weapons</li> <li>-listen to and follow instructions</li> <li>-walk everywhere</li> <li>-keep hands and feet to self</li> <li>-be aware of the space of others</li> </ul>	<ul style="list-style-type: none"> <li>-be kind, polite, &amp; helpful to others</li> <li>-follow directions of all adults</li> <li>-do not damage school or personal property</li> <li>-observe the dress code</li> <li>-be inclusive and accepting of others</li> <li>-use respectful language</li> <li>-respect different sexual orientations</li> </ul>	<ul style="list-style-type: none"> <li>-always give your best effort</li> <li>-be accountable for your actions</li> <li>-no alcohol, drugs or tobacco</li> <li>-clean up / recycle</li> <li>-personal cell phones off &amp; away during instructional time</li> <li>-select digital devices may be used as per teacher discretion</li> <li>-no phones or cameras in washrooms or change rooms</li> <li>-no tampering with fire alarms</li> <li>-report inappropriate behavior</li> </ul>
CLASS-ROOMS	<ul style="list-style-type: none"> <li>-move in an orderly fashion</li> <li>-keep all legs of chairs on the floor</li> </ul>	<ul style="list-style-type: none"> <li>-listen when spoken to</li> <li>-wait to speak</li> <li>-work quietly</li> </ul>	<ul style="list-style-type: none"> <li>-be prepared and on time</li> <li>-hand in all your work on time</li> <li>-ask questions</li> <li>-use class time wisely</li> <li>-bring all required supplies to class</li> <li>-no tampering with computers</li> </ul>
HALL-WAYS	<ul style="list-style-type: none"> <li>-walk on the right side of the hallway</li> <li>-organize belongings before entering hall - way</li> </ul>	<ul style="list-style-type: none"> <li>-use quiet voices</li> <li>-allow space for others to get into their lockers</li> </ul>	<ul style="list-style-type: none"> <li>-enter classrooms quietly</li> </ul>
MAIN DECK	<ul style="list-style-type: none"> <li>-no crowding</li> <li>-no budging in lines</li> </ul>	<ul style="list-style-type: none"> <li>-use proper table manners</li> <li>-no writing on the tables</li> </ul>	<ul style="list-style-type: none"> <li>-leave tables and floor clean</li> </ul>
GYM, LABS AND SHOPS	<ul style="list-style-type: none"> <li>-learn and follow safety rules</li> <li>-use equipment as instructed</li> </ul>	<ul style="list-style-type: none"> <li>-recognize and accept the different abilities of others</li> <li>-practice good teamwork</li> <li>-practice good sportsmanship</li> </ul>	<ul style="list-style-type: none"> <li>-help with the care and storage of equipment</li> <li>-report injuries to the teacher</li> </ul>
OUTSIDE	<ul style="list-style-type: none"> <li>-no riding bikes, scooters, or skate boards on school property</li> <li>-be cautious around vehicles</li> <li>-no snowballs</li> </ul>	<ul style="list-style-type: none"> <li>-be courteous to our Parkland neighbours and wildlife ie. geese</li> </ul>	<ul style="list-style-type: none"> <li>-keep the grounds clean and tidy</li> </ul>
WASH-ROOMS	<ul style="list-style-type: none"> <li>-enter and exit in an orderly fashion</li> </ul>	<ul style="list-style-type: none"> <li>-respect the privacy of others</li> </ul>	<ul style="list-style-type: none"> <li>-flush toilets</li> <li>-wash hands</li> </ul>

School Expectations

## GENERAL CONSEQUENCES FOR CONDUCT ISSUES

In most situations, the teacher involved will deal with discipline matters. The administration is available to assist the teacher or student in trying to find a solution to the problem.

When a student does not respect the rights and/or safety of others, or does not take responsibility for their own education, one or more of the following consequences shall be implemented:

- ♦ the teacher and the student will try to solve the problem
- ♦ the teacher will seek the assistance of the School Based Team, (Administrator, Indigenous Ed Support Worker, Youth Care Workers, Student Services, Counsellor)
- ♦ the teacher will contact the parents or guardians of the student by telephone or letter to inform them of the situation and to try to find a solution to the problem.
- ♦ the teacher will refer the matter to an administrator who will follow Administrative Procedure 350 "Code of Conduct" located on the SD5 website.

## CELL PHONE, DIGITAL SERVICES AND COURTESY PHONE

School District Policy requires that cell phones and any digital devices be used only during non-instructional time.

- ♦ Students may use their phones in the morning before classes begin, during lunch break and after school.
- ♦ During instructional time, cell phones and digital devices are to be left in lockers or placed in the classroom bin/basket, powered down or notifications off.
- ♦ Teachers may ask students to use their phones in class for research, photography, or other curricular reasons, but phones are to be replaced in their storage spots when instructed.
- ♦ Students may not use their cell phone or digital device to fill time if work is complete at the end of class.

At no time are cell phones or digital devices to be used in washrooms or changerooms.

A courtesy phone is available at all times for student use.

School Expectations



## PARKLAND DRESS CODE

Parkland Middle School believes that maintaining a respectful, business-like atmosphere is important to academic achievement and citizenship. The school's dress code is meant to encourage freedom of expression, while also fostering a supportive, respectful learning community. The standards for our school dress code reflect professionalism, comfort, safety, and a clear sense of appropriateness.

### Clothing at Parkland Middle School SHOULD:

- ◆ allow for individual differences, style, and expression
- ◆ be appropriate for the intended activity. Appropriate attire for specialized classes such as gym, outdoor education, or the shops, (dressed for the weather if classes are held outside, closed toed shoes, etc.)
- ◆ respect safety rules/expectations in specific school environments
- ◆ demonstrate respect for the rights and perspectives of others

### Clothing at Parkland Middle School SHOULD NOT:

- ◆ promote drugs, alcohol, violence, weapons, or use offensive language or images
- ◆ promote values in conflict with the school community values and code of conduct (gang promotion, racism, sexism, discrimination of any kind)

Parkland Middle School believes in a deep sense of community and working with families to ensure the safety, nurturing, and growth for all students. We encourage families to spend some time discussing the above dress code expectations.

School Expectations



## BULLYING

Physical violence and horseplay, intimidation, harassment, discrimination, directly or indirectly, in the school, on school grounds, via the Internet or during any activity associated with the school, will not be tolerated. These items refer to, but are not limited to, behaviours and actions that may be perceived as a threat to the safety and well being of others ([www.erasebullying.ca](http://www.erasebullying.ca)).

## RECYCLING

We expect our students and staff to respect and understand our obligation to the environment. We recycle office paper, newspaper, plastic, paper coffee cups, mixed paper, and corrugated cardboard. Look for other ways you can personally reduce, reuse, repair, or recycle both at school and at home.

## WEAPONS, EXPLOSIVES, FIREWORKS, LIGHTING DEVICES

No student shall be in possession of a weapon or use an object as a weapon with the intent to injure or harass while under the school's jurisdiction. Students will not use or display any unauthorized lighting devices (including, but not limited to matches, lighters, laser pointers, etc.) while in school.

## FRAGRANCE FREE POLICY

Please refrain from wearing scented versions of such items as perfumes, colognes, and body sprays. This is not a preference issue—it is a serious health issue for a significant number of people. Reported adverse effects from heavy fragrances range from migraine headaches and asthma attacks to cardiac and neurological symptoms.

School Expectations



## STUDENT FEES

In conjunction with the Ministry of Education fee guidelines for student fees and the School District Policy 3.7, School Fees and Deposits, the school can charge for materials that are beyond the requirements necessary to meet the prescribed learning outcomes of the course.

### STUDENT FEE \$20

This fee covers the cost of this information booklet and rental of the school lock and locker. All students at Parkland Middle School are required to pay this \$20 fee at the beginning of the school year.

### YEARBOOK PURCHASE (optional) \$45

This is an optional fee and covers the cost of the student yearbook. Our yearbook has been in existence for many years. It is a great reminder of all of the people and events. Students do a great job at gathering pictures and stories.

## FEES FOR ADDITIONAL PROJECTS

There may be opportunities for students to do additional projects and/or take part in additional activities such as extracurricular activities, clubs or field trips. Participation in, and student performance during, additional activities is optional and will not be used to determine course standing. The cost for additional projects or activities will be communicated to parents and parental authorization will be obtained before the student may take part. No student will be denied educational opportunities offered at Parkland due to financial hardship.



## ATTENDANCE

Student attendance is reported to the office. All students are expected to be at class on time. On Time means being ready to start learning, with all needed supplies, when the bell rings.

The Parkland secretary contacts the parent/guardian of every student who is reported absent **without a phone call** excusing the student. If a student is absent from school without permission, the student is considered truant. Please phone the school and leave a message on our 24 hour answering machine (250-426-3327), email to [pms.absence@sd5.bc.ca](mailto:pms.absence@sd5.bc.ca) or log into Safe Arrival if your child will be late or absent from school.

## LATE ARRIVAL TO SCHOOL

Students are expected to be on time for all school activities. Students who are not in class with their required materials prior to these start times are considered late. All students who are late will be required to report to the office. Students who are repeatedly late without an acceptable reason may face further administrative intervention.

## ILLNESS

If your child becomes ill at school, they may call home. Parents can then arrange pick-up or inform the office staff that the student has permission to walk home. Students must sign out at the office. Students should not come to school if they are sick.



## BELL SCHEDULE

Welcome Bell 8:25 AM		
Period 1	8:30 AM	to 9:37 AM
Period 2	9:41 AM	to 10:47 AM
Nutrition Break	10:47 AM	to 10:57 AM
Period 3	10:57 AM	to 12:03 PM
Lunch Break	12:04 PM	to 12:52 PM
Period 4	12:53 PM	to 1:59 PM
Period 5	2:03 PM	to 3:09 PM





## PLANNING AN ABSENCE

The school recognizes that, from time to time, it may be necessary for a student to miss school because of family vacations, extended travel, funerals, trips to medical specialists, and other situations. We presume that parents will not allow their children to miss school indiscriminately. Parents and students should note, however, that absence for any reason might affect learning progress. Please inform the office secretary and your teacher if you are going away. Early notice is appreciated. Students are responsible for work covered in class while absent.

## SCHOOL BUS GUEST RIDERS

If a student who is not a registered bus rider wishes to ride the bus after school, they require a written parent request and must have it initialed by the principal or vice principal prior to requesting a seat from the bus driver. Please note a seat on the bus is not guaranteed, even with a signed note. For more information, please contact the Bus Shop at 250-417-2075.

## SCHOOL SUPPLIES

Parkland has a general supply list at the office and our school webpage. Students are given a supply list by their subject teachers in September. It is a wise idea to have all supplies labeled.



## EXTRA CURRICULAR TRIPS

Extra curricular trips are a valuable supplement to the regular school program. On occasion, it may be necessary for students to miss classes because of participation in a school related trip or activity. Student participation is subject to parental permission. The office requires signed parental permission forms prior to departure. Students must complete all assignments given during their absence from class. Part of making an informed choice about participation in extra curricular trips should include thoughtful consideration of the student's academic performance. We remind students and parents that the Parkland Code of Conduct in conjunction with School District 5 Code of Conduct is in effect on all school trips within and outside the regular hours of the school day.

## FIELD TRIPS

Field trips enhance certain learning objectives within the school program. When trips occur, the necessary signed parental permission form is needed before trip departure. We remind students and parents that the Parkland Code of Conduct in conjunction with School District 5 Code of Conduct is in effect on all school trips within and outside the regular hours of the school day. Every September, parents will be asked to fill out a general low risk permission form for travel by foot or bus within city limits which will apply for the current school year.

## LOST AND FOUND

All "lost and found items" are turned in to the office. All unclaimed items will be donated to a local charity.



## HEADPHONES

Headphones and earbuds are not to be worn in class, other than for instructional purpose under teacher supervision or as part of an individual education plan (IEP).

## BACKPACKS

Parkland provides lockers for the safe storage of student belongings during the day. Backpacks are to be kept in lockers and not taken from class to class.

## LOCKER USE

School District #5 issues a combination lock and locker to each student at Parkland. A parent/guardian must sign a student locker use form. The locker rental fee is part of your yearly student fees. Lockers and locks are the property of the school district. In order to ensure that student lockers are used for appropriate school purposes, administration may inspect student lockers. Students must use the school lock. Lost locks will be replaced for a \$5.00 fee.

## DISPLAY OF AFFECTION

We want you to like each other. More than that, we want you to respect yourselves and each other. Public displays of affection are inappropriate at school.

## GYMNASIUM CLOTHING

Every student taking a physical education course should have a clean change of clothing that includes: a T-shirt, shorts or sweat pants, and running shoes. Parkland Dress Code applies for gym classes. Students are asked not to use aerosol based deodorants.



## DANCES

School dances occur periodically throughout the school year, and are popular events that build relationships, social skills, and enhance the middle school experience.

The following expectations are held:

- ♦ dress code applies
- ♦ students must be in attendance the day of the dance
- ♦ no outside beverages permitted
- ♦ all school fees must be paid unless prior arrangements have been made with administration
- ♦ students can expect to have bags inspected
- ♦ students must be in good standing in order to attend dances

Administration reserves the right to withhold dance privileges in cases of chronic absenteeism, lates, or unacceptable behaviour.

## PARKLAND RAIDERS

We have a variety of school teams and clubs, including:

Volleyball	Badminton	Chess
Basketball	Track & Field	Archery
Climbing Wall	Badminton	Minecraft
Homework	D&D	

Other teams or clubs may be added based on student interest.



## GYMNASIUM

Our gymnasium is open to all students who wish to participate in intramurals during lunch hour. Some days during the year will be considered open gym for any students. Students may also sign out basketballs, soccer balls, footballs, etc. provided there is a teacher to supervise these activities. We encourage participation as part of student daily physical activity.



PARKLAND MIDDLE SCHOOL

Services

## THE CROW'S NEST LEARNING COMMONS

At Parkland, our library is the Crow's Nest Learning Commons! Our Crow's Nest Learning Commons has an excellent selection of books and magazines, and computers are available, too. All students are welcome to use the Internet, as long as the permission form has been signed by a parent/guardian. The Crow's Nest Learning Commons is open at lunchtime, and the detailed hours will be posted on the door.

## LEARNING SERVICES

Support is available during class time for students who require extra assistance on schoolwork or tests. Teachers can refer, or students may ask permission to go, to the learning centre in room 123. The learning centre can provide small group or individual instruction in the core areas.

## RESPONSE TO INTERVENTION

The Parkland community is dedicated to learning. When students are not being successful in their learning, staff will refer the matter to our School Based Team who will consider the options for support. Parkland School Based Team normally consists of student services teachers, classroom teacher(s), school counsellor, youth care worker, aboriginal education support worker and administration.

## EDUCATIONAL SUPPORT

The Learning Centre is a place where students can go for extra support. Room 123 is staffed and open to all students throughout the day.

Parents are encouraged to contact classroom teachers first with academic concerns.

Further concerns can be emailed to [firstname.lastname@sd5.bc.ca](mailto:firstname.lastname@sd5.bc.ca)



PARKLAND MIDDLE SCHOOL

Services



## Parkland Counselling Services

**Ph: (250) 426-3327 ext. 21209**

School counsellors are teachers who have further former training in counselling. They can provide support for students and their families in several areas which impact learning, such as social, emotional, and mental health.

### For students:

- Mental health support.
- Social and emotional support.
- Personal counselling and assistance accessing community services.
- School functioning and readiness support.
- Assistance in coping with course, class, and schedule challenges.
- Assistance in addressing peer issues, bullying, and safety.
- Course planning and academic advice.

### For families and students:

- Assistance in identifying and accessing various mental health services.
- Assistance with other support agencies focusing on safety, children, and families.
- General consultation regarding family challenges, school trends and peer social issues.
- Assistance with safety and crisis management (current situations should first be reported directly to our school admin).

Your school counsellor, Dan van der Walt, can be contacted during school hours at the number above. More contact information can be found on the school website.

### COUNSELLOR

School counsellors are teachers who have further former training in counselling. They can provide support for students and their families in several areas which impact learning, such as social, emotional, and mental health.





## INDIGENOUS EDUCATION

All students who identify themselves being of aboriginal ancestry are eligible for support services through the Indigenous Education Program. Johanna Kinsman, our Indigenous Education Support Worker, provides a welcoming space and offers a sense of belonging as respected and valued students. This is a safe place where students can gather and feel comfortable, and to make connections with adults in the eedeedebuilding.

Just a few of the supports offered include:

- Emotional/Behavioural
- Cultural Relevance/understanding
- Community support referrals/meetings
- Free Access to Food/School Supplies/School requests
- Cooking Program, Indigenous workshops, Ktunaxa Language
- Student Advocacy in the educational setting
- Academic Support Available
- Monitoring progress and attendance
- Referrals to outside agencies

Johanna can be contacted by email at [Johanna.kinsman@sd5.bc.ca](mailto:Johanna.kinsman@sd5.bc.ca) or by telephone at 250-426-3327.



## YOUTH CARE WORKER

Parkland Middle School offers full time Youth Care services. Kelly Fentie and Robin Priore our Youth Care Workers, provide behavioural, emotional, and social support to students.

The Youth Care Workers help facilitate various programs and services for students including:

- Referrals to community supports and services
- Life skills groups
- Facilitation of our school's monthly Salad Bar Program
- Access to basic need items (clothing, hygiene supplies, school supplies etc.)
- Facilitation of our Breakfast Club and Lunch Program
- Communication between students, parents and teachers
- Support with academics and organization skills

Students needing a place to eat lunch can join Robin and Kelly in the Youth Care Room. Parents are welcome to stop by the Youth Care Office at any time to discuss their child's needs.

---

## TEACHER ASSISTANCE OUT OF REGULAR CLASS TIME

All teachers are willing to help students outside of regular class time. Students must request such help and set up a time.





## COMMUNICATING STUDENT LEARNING

Students and parents will be provided with strength based descriptive feedback on learning throughout the school year. This will include the use of a student proficiency scale. Letter grades will not be included unless specifically requested by a parent.

## EVALUATION & CURRICULUM

Evaluation of student progress is based on performance standards. Standards are realistic expectations of what students need to know and be able to do as a result of their education. In British Columbia, prescribed “learning outcomes” outline what schools are required to teach and what students are expected to learn.

Based on the learning outcomes and expected levels of performance, teachers set specific criteria to evaluate student learning. These criteria form the basis for evaluating and reporting on student progress.

Proficiency Scale	→			
	Emerging	Developing	Proficient	Extending
	The student demonstrates an initial understanding of the concepts and competencies relevant to the expected learning.	The student demonstrates a partial understanding of the concepts and competencies relevant to the expected learning.	The student demonstrates a complete understanding of the concepts and competencies relevant to the expected learning.	The student demonstrates a sophisticated understanding of the concepts and competencies relevant to the expected learning.



## LEARNING STANDARDS

### Personalized Learning

The redesign of BC’s curriculum provides flexibility to inspire the personalization of learning and addresses the diverse needs and interests of BC students.

### Aboriginal Perspectives and Knowledge

Aboriginal culture and perspectives have been integrated throughout all areas of learning. For example, place based learning and emphasis on indigenous ways of knowing reflect the First Peoples Principles of Learning in the curriculum.

### Ecology and the Environment

Revisions to the science curriculum were made to ensure better representation of ecology and environmental learning.

### Historical Wrongs

The curriculum includes the history of the Asian and South Asian communities and their contributions to the development of our province—as well as the injustices they experienced.

### Flexible Learning Environments

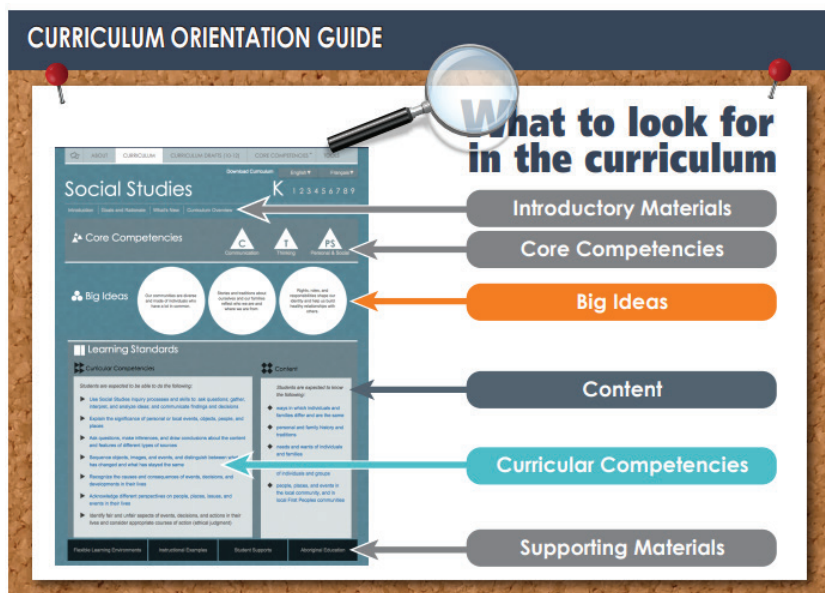
BC’s redesigned curriculum provides teachers with great flexibility in creating learning environments that are relevant, engaging, and novel. Flexible learning environments give consideration to local contexts and place-based learning.

# Communicating Student Learning

The new curriculum being used in BC is one that is focused on developing core competencies that students will need to be successful. These are the intellectual, personal, social and emotional skills needed in order to engage in deep learning and life-long learning. Core competencies are global throughout each subject area.

More information can be found at <https://curriculum.gov.bc.ca>

Notes:








**CALENDAR 2024 / 2025**





2024	October					
SUNDAY	MONDAY	TUESDAY	WEDNESDAY	THURSDAY	FRIDAY	SATURDAY
29 WEEK 2	30 Day of Truth and Reconciliation No School	01	02	03	04 Mon 2 Rotation	05
06 WEEK 1	07 Staff Meeting 3:20 pm	08 STUDENT FEES DUE	09	10	11 Tues 1 Rotation	12
13 WEEK 2	14 THANKSGIVING	15	16 PAC Meeting & AGM 6:30 pm	17	18 Mon 2 Rotation	19
20 WEEK 1	21	22	23	24	25 PRO-D NO SCHOOL FOR STUDENTS	26
27 WEEK 2	28	29	30 HALLOWE'EN DANCE 	31 Hallowe'en 	01	02
03	04	Notes: Oct 25 & 26: Bantam Girls Volleyball Tournament				

2024	November					
SUNDAY	MONDAY	TUESDAY	WEDNESDAY	THURSDAY	FRIDAY	SATURDAY
27	28	29	30	31	01 NON INSTRUCTIONAL DAY	02
03 WEEK 1	04 Staff Meeting 3:20 pm	05	06 School Photo Retakes 	07	08 Remembrance Day Assembly Mon 2 Rotation 	09
10 WEEK 2	11 Remembrance Day NO SCHOOL 	12	13	14	15 Mon 2 Rotation	16
17 WEEK 1	18	19	20 PAC Meeting 6:30 pm	21	22 PRO-D NO SCHOOL FOR STUDENTS	23
24 WEEK 2	25	26	27	28 REPORT CARDS PUBLISHED ONLINE	29 Wed 1 Rotation	30
01	02	Notes: November 15 & 16: Grade 7 Boys Volleyball Tournament				


2024

# December

## Décembre

Nistamu

## The Sun Goes Under

SUNDAY	MONDAY	TUESDAY	WEDNESDAY	THURSDAY	FRIDAY	SATURDAY
01	02	03	04	05	06	07
WEEK 1	Staff Meeting 3:20 pm				Tues 2 Rotation	
08	09	10	11	12	13	14
WEEK 2				WINTER DANCE 	Thurs 1 Rotation	
15	16	17	18	19	20	21
WEEK 1	WESTERN WEEK	WESTERN WEEK	WESTERN WEEK	WESTERN WEEK	WESTERN WEEK Mon 1 Rotation	
22	23	24	25	26	27	28
	WINTER BREAK	WINTER BREAK	STATUTORY HOLIDAY	STATUTORY HOLIDAY	WINTER BREAK	
29	30	31	01	02	03	04
	WINTER BREAK	WINTER BREAK				
05	06	Notes: LOCKER CLEANOUT: Dec 16th, Grade 7; Dec 17th, Grade 8; Dec 18th, Grade 9				

2025	January					
	Janvier			Nakata?suk		After Chinook
SUNDAY	MONDAY	TUESDAY	WEDNESDAY	THURSDAY	FRIDAY	SATURDAY
29	30	31	01	02	03	04
			STATUTORY HOLIDAY	WINTER BREAK	WINTER BREAK	
05	06	07	08	09	10	11
WEEK 2					Tues 1 Rotation	
12	13	14	15	16	17	18
WEEK 1	Staff Meeting 3:20 pm		PAC Meeting 6:30 pm		Wed 2 Rotation	
19	20	21	22	23	24	25
WEEK 2					NON INSTRUCTIONAL DAY	
26	27	28	29	30	31	01
WEEK 1	START SEMESTER 2				Mon 1 Rotation	
02	03	Notes:				



2025

February

Février

Nupqu

The Time Bear Cubs are Born

SUNDAY	MONDAY	TUESDAY	WEDNESDAY	THURSDAY	FRIDAY	SATURDAY
26	27	28	29	30	31	01
02 WEEK 2	03 Staff Meeting 3:20 pm	04	05 WINTER ACTIVITY DAY #1	06	07 Thurs 1 Rotation	08
09 WEEK 1	10	11	12 SCHOOL DANCE 	13	14 NON INSTRUCTIONAL DAY	15
16 WEEK 2	17 STATUTORY HOLIDAY	18	19 PAC Meeting 6:30 pm	20	21 Mon 2 Rotation	22
23 WEEK 1	24	25	26 Pink Shirt Day WINTER ACTIVITY DAY #2	27 REPORT CARDS PUBLISHED ONLINE	28 PRO-D NO SCHOOL FOR STUDENTS	01
02	03	Notes:				


2025

# March

## Mars

## ᐱᐱᐱ Melting Snow Starts Flowing

SUNDAY	MONDAY	TUESDAY	WEDNESDAY	THURSDAY	FRIDAY	SATURDAY
23	24	25	26	27	28	01
02	03	04	05	06	07	08
WEEK 2	Staff Meeting 3:20 pm				NON INSTRUCTIONAL DAY	
09	10	11	12	13	14	15
WEEK 1					Mon 2 Rotation	
16	17	18	19	20	21	22
	SPRING BREAK	SPRING BREAK	SPRING BREAK	SPRING BREAK	SPRING BREAK	
23	24	25	26	27	28	29
	SPRING BREAK	SPRING BREAK	SPRING BREAK	SPRING BREAK	SPRING BREAK	
30	31	Notes: LOCKER CLEANOUT: March 10th, Grade 7; March 11th, Grade 8; March 12th, Grade 9				


2025	April					
SUNDAY	MONDAY	TUESDAY	WEDNESDAY	THURSDAY	FRIDAY	SATURDAY
30 WEEK 2	31	01	02	03	04 NON INSTRUCTIONAL DAY	05
06 WEEK 1	07 Staff Meeting 3:20 pm	08	09	10	11 Tues 2 Rotation	12
13 WEEK 2	14	15	16 PAC Meeting 6:30 pm	17	18 STATUTORY HOLIDAY	19
20 WEEK 1	21 STATUTORY HOLIDAY	22 	23	24 SPRING DANCE REPORT CARDS PUBLISHED ONLINE	25 Mon 1 Rotation	26
27 WEEK 2	28 PRO-D NO SCHOOL FOR STUDENTS	29	30	01	02	03
04	05	Notes:				

Avril

Kakk'mi

Cracks Begin to Form in the Ground

2025	May					
SUNDAY	MONDAY	TUESDAY	WEDNESDAY	THURSDAY	FRIDAY	SATURDAY
27	28	29	30	01	02	03
					Mon 2 Rotation	
04	05	06	07	08	09	10
WEEK 1	Staff Meeting 3:20 pm				Thurs 2 Rotation	
11	12	13	14	15	16	17
WEEK 2					NON INSTRUCTIONAL DAY	
18	19	20	21	22	23	24
WEEK 1	STATUTORY HOLIDAY		PAC Meeting 6:30 pm		Mon 1 Rotation	
25	26	27	28	29	30	31
WEEK 2					NON INSTRUCTIONAL DAY	
01	02	Notes:				

2025	June					
	Juin		Kuqukupku		Ripening of Strawberries	
SUNDAY	MONDAY	TUESDAY	WEDNESDAY	THURSDAY	FRIDAY	SATURDAY
01  WEEK 1	02  Staff Meeting 3:20 pm	03	04  SPRING ACTIVITY DAY	05  LIBRARY BOOKS DUE	06  Grade 6 Visitation Day Wed 1 Rotation	07
08  WEEK 2	09	10	11	12	13  PRO-D NO SCHOOL FOR STUDENTS	14
15  WEEK 1	16  RAIDER WEEK	17  RAIDER WEEK	18  PAC Meeting 6:30 pm	19  YEAR END DANCE 	20  Tues 2 Rotation	21  National Indigenous Peoples Day
22  WEEK 2	23  Last Day of Classes for Students End Term 4	24	25	26  FINAL REPORT CARDS PUBLISHED ONLINE	27  ADMINISTRATIVE DAY	28
29	30  NON INSTRUCTIONAL DAY	01	02	03	04	05
06	07	Notes: LOCKER CLEANOUT: June 16th, Grade 7; June 17th, Grade 8; June 18th, Grade 9				

# Notes

[illegible]

## Notes

[illegible]





**PARKLAND MIDDLE SCHOOL**

1115 2nd Avenue South  
Cranbrook, BC V1C 2B4  
Canada

Phone: (250) 426-3327  
Fax: (250) 426-6334